

FUJITSU

ScanSnap

SV600

***Simple, Speedy & Compact.
From Paper to PDF in one touch!***

- ▶ Minimize unevenness in image quality with "VI technology"
- ▶ Automatically cropping of several documents with "Multiple Document Detection"
- ▶ Shorten operating time with "Page Turning Detection"
- ▶ Correct distortion and curviness of books with "Book Image Correction"
- ▶ Various functions for making your daily work easier and simpler



shaping tomorrow with you

A New Perspective on scanning



ScanSnap
SV600

Digitize anything with ease

You can scan newspaper, magazines or books directly without cutting or damaging it.

Scan anything from business cards to A3 size (landscape)* documents

No more hassle to cut or fold documents larger than A4 size such as newspaper and magazines, simply position the documents and they can be scanned directly without any extra effort.

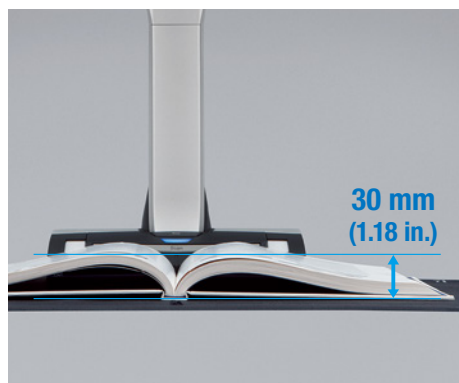
*The maximum document size will be 400 x 300 mm when the thickness of the document is over 5 mm.



No problem in scanning thick documents*

Not only books or magazines, but also documents with sticky notes can be scanned directly without any difficulty.

*Maximum document thickness is 30 mm (1.18 in.).



No need to worry about your delicate documents or books

With "VI technology", scanning can be performed without touching the document. You do not need to worry that documents such as crayon or oil paintings, pencil writings or photos will be damaged by touching.



VI technology*

(*VI technology: Versatile Imaging technology)

Equipped with "VI technology" which combines Deep depth of field lens, CCD linear image sensor and High directivity LED lamp, SV600 is able to minimize unevenness in image quality and generate smooth image even scanning from a distance.



Overhead structure

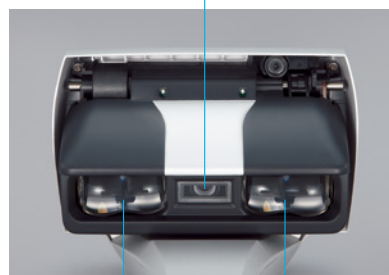
*Due to the characteristics of overhead scanner, the image quality is different from the past ScanSnap series. Please confirm the image quality of SV600 from ScanSnap website before making purchase.

Deep depth of field lens

Wide auto focus area (even the focusing distance has changed)

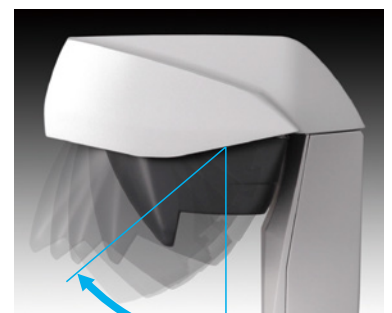
CCD linear image sensor

Produce steady images



High directivity LED lamp

Maintain same brightness without affecting by the surrounding



Scan by moving the head

Convenient for book scanning

Step 1

You can continuously scan multiple pages smoothly.

Page Turning Detection

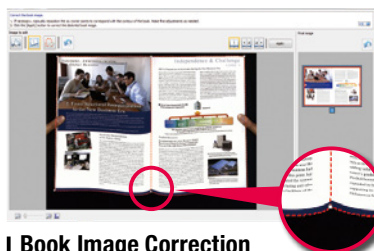
Automatically detect when the page is turned.

Timed Mode

You can set the time to start scanning after the "Scan" button is pressed. (When continuous scanning) you can set the time interval before the next scanning to begin.

Step 2

Book Image Correction – Automatically correct distortion caused by the curve of an opened book. You can confirm and fine tune the scanned images on the preview dialog after scanning.



Book Image Correction

Can easily correct distortion of the document.



Point Retouch function

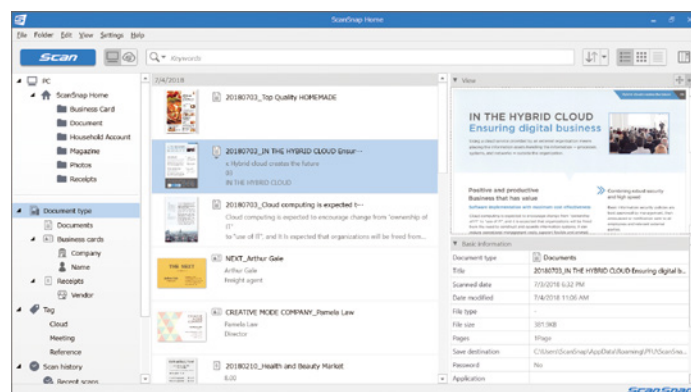
Finger images scanned while suppressing the document can be corrected with ease.



ScanSnap Home – Powerful software that integrates all document productivity features

ScanSnap Home combines all your favorite functions into one and is the ultimate platform to utilize scanned data in various ways. Easily manage, edit and utilize data from documents, business cards, receipts and photos with the software. You can scan large volumes of documents of various types, from color photos to double-sided landscape documents with a host of intelligent automatic image processing functions.

* Legacy ScanSnap Manager software is also available.



Quickly find that recipe or meeting agenda that you stored last week with easy access tags.



Contact whoever you need right away with the software organizing captured data according to company name and much more.



Create an original album and share important memories with your family and friends.

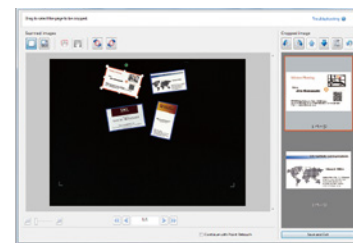


Keep track of your spending habits each month so that you can check back whenever you desire.

Automatically cropping of several documents with "Multiple Document Detection"*

With only one touch and one scan, the "Multiple Document Detection" function is able to crop several documents at the same time when positioning in the scanning area. You can save time and hassle by placing several business cards, photos, newspaper clippings and other documents at once and let SV600 does the cropping intelligently for you.

* Up to 10 documents can be cropped as long distances between documents are over 15 mm.



Fast start up time and scanning speed lead to time saving and efficiency

SV600's start up time is so quick; scanning is ready in only 3 seconds after switching on the scanner. Furthermore, less than 3 seconds are needed for scanning large A3 size documents. This high speed scanning let you enjoy stress free scanning.

Compact design that does not occupy much work space

SV600 is compact and you can use your work space efficiently as you only need space to place document when scanning. Unlike flatbed scanner, it will not occupy your valuable desk space all the time.

■ General Specifications

| | | |
|---|---|---|
| Description | ScanSnap SV600 | |
| Scanner type | Over Head system, simplex scanning | |
| Scanning modes | Color, grayscale, monochrome, Automatic (color, grayscale, monochrome detection) | |
| Image sensor | Lens reduction optics / color CCD x 1 | |
| Light source | (White LED + lens illumination) x 2 | |
| Optical resolution | Horizontal scanning: 285 to 218 dpi, Vertical scanning: 283 to 152 dpi *1 | |
| Scanning speed (A3 landscape) *2 | Auto mode *3 | "Better mode" or "Best mode": 3 seconds / page |
| | Normal mode | Color / Grayscale: 150 dpi, Monochrome: 300 dpi 3 seconds / page *4 |
| | Better mode | Color / Grayscale: 200 dpi, Monochrome: 400 dpi 3 seconds / page *4 |
| | Best mode | Color / Grayscale: 300 dpi, Monochrome: 600 dpi 3 seconds / page *4 |
| | Excellent mode | Color / Grayscale: 600 dpi, Monochrome: 1,200 dpi 3 seconds / page *4 |
| Document size | Automatically recognizes document size, A3(landscape), A4(landscape), A5(landscape), A6(landscape), B4(landscape), B5(landscape), B6(landscape), Post card, Business card, Double Letter(landscape), Letter, Legal(landscape) and Customized size (Max: 432 x 300 mm (17.0 x 11.8 in.), Min: 25.4 x 25.4 mm (1 x 1 in.)) *5 | |
| Document thickness | 30 mm (1.18 in.) or less | |
| How to start scanning *6 | Select one of the below. 1. Normal scan: Press "Scan" button for every page 2. Timed Interval Scanning (Timed Mode) 3. Page turning detection | |
| Interface *7 | USB2.0 / USB1.1 (connector: B Type) | |
| Image processing functions | Deskew by text on document, Auto paper size detection, Auto image rotation, Auto color detection, Book image correction *8, Multiple document detection *9 | |
| Magnification in vertical scanning (length) | ±1.5% | |
| Power requirement | AC 100 to 240 V, 50 / 60 Hz | |
| Power consumption | Operating mode: 20 W or less Sleep mode: 2.6 W or less Auto Standby (Off) mode: 0.4 W | |
| Operation environment | Temperature: 5 to 35 °C (41 to 95 °F) Relative humidity: 20 to 80 % (Non-condensing) | |
| Dimensions (W x D x H) | 210 x 156 x 383 mm | |
| Device weight | 3 kg (6.613 lb) | |
| Environmental compliance | ENERGY STAR® / RoHS | |
| Driver | Specific driver (Does not support TWAIN / ISIS™) | |

*1 Optical resolution differs due to different scanning angle on the same document. *2 Scanning speed may vary due to the system environment used. *3 Switch between "Better mode" and "Best mode" depends on the length of the document. A4 (portrait): 200 dpi, A6 size or below: 300 dpi *4 Time between actual start of scanning (scanning pad) and finish scanning. *5 For documents of thickness over 5 mm, the maximum document size is 400 x 300 mm. *6 When performing continuous scanning, time is needed for the scanning head to return to its original position. *7 Compatible with USB 3.0 port but connection will run as USB 2.0 speed. *8 Automatically correct distortion caused by the curve of an opened book or magazine. *9 Digitize multiple documents by automatically cropping several documents in one scan.

■ Cleaning Materials

| Description | Part number | Remarks |
|---------------|--------------|--|
| Cleaner F1 | PA03950-0352 | 100 ml bottle For cleaning the glass, camera, lamp etc of the scanning head. |
| Cleaning Wipe | PA03950-0419 | 1 pack (24 packets) Wet tissue with "cleaner F1". For cleaning the glass, camera, lamp etc of the scanning head. |

■ Software

| Windows* | macOS |
|--------------------------------|------------------------------------|
| ScanSnap Home*1 | |
| ScanSnap Manager*2 | |
| Kofax Power PDF Standard*3 | Kofax Power PDF Standard for Mac*3 |
| ABBYY FineReader for ScanSnap™ | |

*1 ScanSnap Home installation requires a computer and Internet. Activation is also necessary for software use. Please visit the company website for download information. <https://scansnap.fujitsu.com/g-support/en> *2 Use in conjunction with ScanSnap Home requires ScanSnap Manager V7 and later. *3 Please refer to the included license certificate to download the software.

■ ScanSnap SV600 System Requirements

● Windows®

| | | |
|-------------------------------|---|--|
| Recommended operating systems | Windows® 11 (64-bit) Windows® 10 (32-bit / 64-bit) *1*2 Windows® 8.1 (32-bit / 64-bit) *2 Windows® 7 (32-bit / 64-bit) | |
| Hardware requirements *3 | CPU *4 | Intel® Core™ i5 2.5 GHz or higher |
| | Memory capacity *4 | 4 GB or more |
| | Display resolution | 1,024 x 768 pixels or higher |
| | Disk capacity *5*6 | 3.8 GB or more of free hard disk space |

*1 ScanSnap scanners do not run with Windows® 10 ARM-based PCs. *2 Operate Windows in desktop mode. *3 The ScanSnap device may not work if the connected computer does not meet these requirements. *4 Scanning speeds may drop if the recommended CPU, memory capacity and USB 1.1 requirements are not met. *5 Indicated disk capacity requirements apply when downloading ScanSnap Home. *6 Microsoft .NET Framework 4.7 or later must be installed. If it is not installed, it is installed with ScanSnap Home. Up to 4.5 GB of disk space is required for the installation. *Please refer to the ScanSnap website for the latest support information of the driver and applications. Compatibility may differ depending on the software's version. *The system requirements may change depending on the duration of support and the support policy of the companies that make the software.

● Mac

| | | |
|-------------------------------|----------------------------------|--|
| Recommended operating systems | macOS High Sierra 10.13 or later | |
| Hardware requirements *1 | CPU *2 | Intel® Core™ i5 2.5 GHz or higher |
| | Memory capacity *2 | 8 GB or more |
| | Display resolution | 1,024 x 768 pixels or higher |
| | Disk capacity | 2.0 GB or more of free hard disk space |

*1 The ScanSnap device may not work if the connected computer does not meet these requirements. *2 Scanning speeds may drop if the recommended CPU, memory capacity and USB 1.1 requirements are not met. *Please refer to the ScanSnap website for the latest support information of the driver and applications. Compatibility may differ depending on the software's version. *The system requirements may change depending on the duration of support and the support policy of the companies that make the software.

■ Included items

| |
|---|
| <ul style="list-style-type: none"> ● AC cable ● AC adapter ● Safety Precautions ● USB cable ● Background Pad ● Extenders (x2) |
|---|

■ Option

| Description | Part number | Remarks |
|----------------|--------------|---|
| Background Pad | PA03641-0052 | Set in front of the scanner when scanning. *One pad is bundled with the scanner. |

This scanner is designed to digitize materials that can be reproduced lawfully, in accordance with applicable copyright regulations and other laws. ScanSnap users are responsible for how they use this scanner. It is imperative that ScanSnap users comply with all applicable local rules and laws, including, without limitation, copyright laws when using this scanner.

*ABBYY and FineReader are trademarks of ABBYY Software, Ltd. which may be registered in some jurisdictions. ABBYY™ FineReader™ Engine ©ABBYY. OCR by ABBYY. *Evernote is a registered trademark or trademark of Evernote Corporation. *Google and Google Drive are registered trademarks or trademarks of Google Inc. *Intel, Pentium, and Intel Core are registered trademarks or trademarks of Intel Corporation in the United States and other countries. *ISIS™ is a registered trademark of EMC Corporation in the United States. *Mac, macOS, and the Mac logo are trademarks of Apple Inc. *Kofax and Power PDF are trademarks or registered trademarks of Kofax Limited in the United States and other countries. *ScanSnap, the ScanSnap logo and ScanSnap Home are registered trademarks or trademarks of PFU Limited in Japan. *Other company names and product names are the registered trademarks or trademarks of the respective companies.

ABBYY® FineReader®



PFU Limited, a Fujitsu company, has determined that this product meets the ENERGY STAR® guidelines for energy efficiency. ENERGY STAR® is a registered trademark of the United States.

For more ScanSnap related information, visit our website at : www.scansnap.com

| | | |
|-----------------------------|---|---|
| ⚠ Safety Precautions | Be sure to carefully read all safety precautions prior to using this product and use this device as instructed. | Do not place this device in wet, moist, steamy, dusty or oily areas. Using this product under such conditions may result in electrical shock, fire or damage to this product. |
|-----------------------------|---|---|

Specifications are subject to change without notice.

©2021 PFU Limited Printed in some country 2021.12 U-110 SZX-50K7