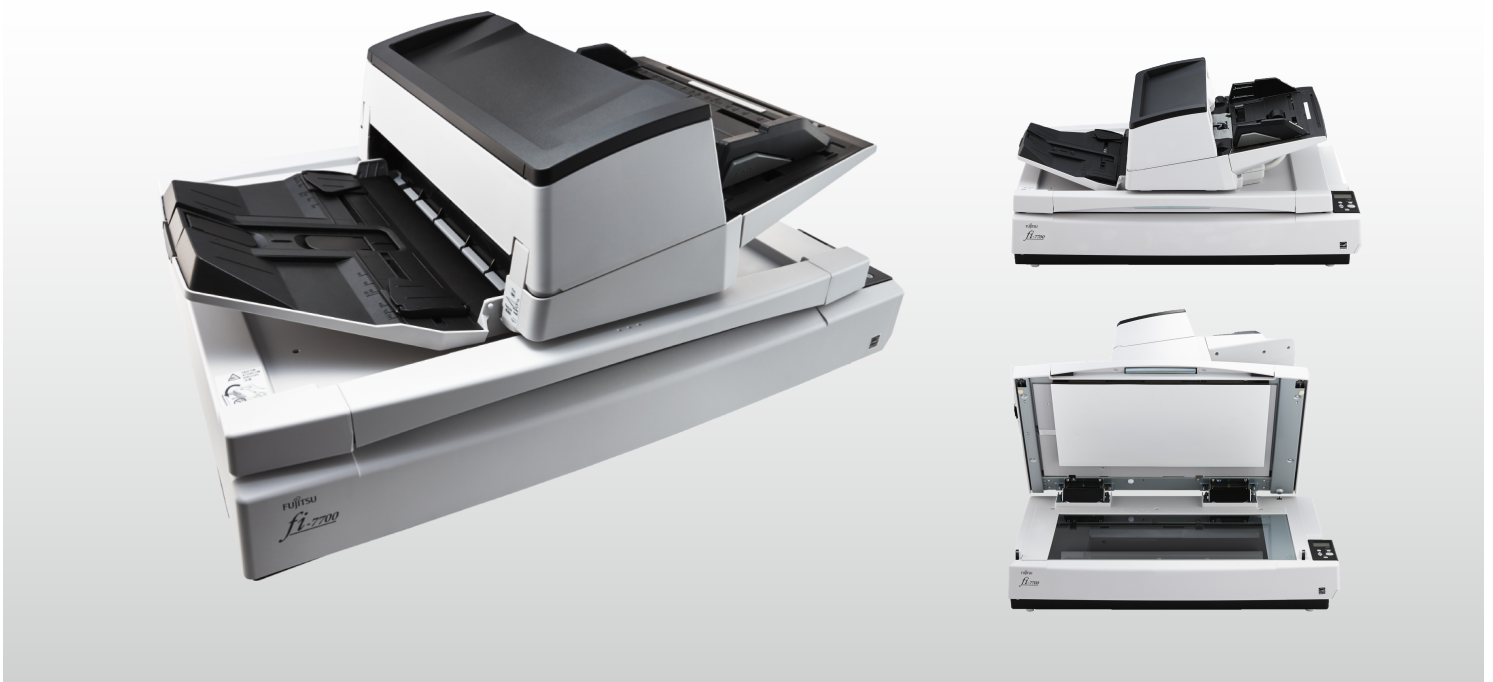


Datasheet

FUJITSU Image Scanner fi-7700

Flatbed scanner for professional use enables heavy-duty & flexible scanning



The fi-7700 scans documents at 100 ppm/200 ipm (A4 landscape 200/300 dpi) and improves work efficiency with its ability to scan a wide variety of business documents as well as capacity to load 300 sheets at a time.

Assistance for safe and reliable scanning

The straight paper path structure is designed to assure stable scanning regardless of document conditions and types. With Manual/Single mode, scan thick documents such as drawings folded in half, multi-layered receipts, and envelopes without specific operation. Minimize risk of document damage with stable paper feeding that Paper Protection function provides through its detection of anomalies in sound and monitoring of paper feed distance. Missing edges are also no longer a struggle with the scanner's Skew Reducer mechanism.

Flexible and functional design to meet all user needs

The fi-7700 is equipped with an ADF that can slide to the right or left, as well as rotate 180 degrees, enabling easy document loading with ADF adjustment to suit workspace environments or physical conditions. Keep track of scanner operations such as document scanning settings, number of sheets scanned, as well as any existing error statuses, using the LCD operation panels. Load documents with ease and reduce your workload before and after scanning, with the scanner's independent side guides helping you align edges of variously sized documents. You can now also scan thick or fragile documents with the document cover kept open, thanks to the Cover-Open Cropping function.

Advanced software for maximized efficiency

Bypass the inconvenience of making fine adjustments to OCR settings with the PaperStream IP scanner driver, supporting both TWAIN and ISIS. The software automatically converts scanned images into exceptionally clean images, supporting OCR accuracy even when scanning documents with background patterns or wrinkled and soiled documents. Seamlessly linked to PaperStream IP, PaperStream Capture effectively and efficiently feeds information into your organization workflow with its various batch scanning capture features. Automatically utilizing data extracted from barcodes and patch codes, the software also determines your preferred saving destinations and eliminates time allocated to routine tasks.

Technical Information

Scanner Type	ADF (Automatic Document Feeder) / Manual Feed / Flatbed, Duplex	
Scanning Speed* ¹ (A4 Landscape) (Color* ² /Grayscale* ² /Monochrome* ³)	ADF	Simplex: 100 ppm (200/300 dpi) Duplex: 200 ipm (200/300 dpi)
	Flatbed	0.6 seconds (200/300 dpi)
Scanning Speed* ¹ (A4 Portrait) (Color* ² /Grayscale* ² /Monochrome* ³)	ADF	Simplex: 80 ppm (200/300 dpi) Duplex: 160 ipm (200/300 dpi)
	Flatbed	0.9 seconds (200/300 dpi)
Image Sensor Type	Color CCD x 3 (front x 1, back x 1, Flatbed x 1)	
Light Source	White LED Array x 6 (front x 2, back x 2, Flatbed x 2)	
Optical Resolution	600 dpi	
Output Resolution* ⁴ (Color / Grayscale / Monochrome)	50 to 600 dpi (adjustable by 1 dpi increments) 1,200 dpi (driver)* ⁵	
Output Format	Color: 24-bit, Grayscale: 8-bit, Monochrome: 1-bit	
Background Colors	ADF: White / Black (selectable) Flatbed: White (or optional black)	
Document Size		
ADF	Maximum	304.8 x 431.8 mm (12 x 17 in.)
	Minimum	50.8 x 69 mm (2 x 2.7 in.) (Portrait)
	Long Page Scanning* ⁶	5,588 mm (220 in.)
Flatbed	Maximum	304.8 x 457.2 mm (12 x 18 in.)
Paper Weight (Thickness)* ⁷		
Paper	20 to 413 g/m ² (5.3 to 110 lb) Less than A8 size: 128 to 209 g/m ² (34 to 56 lb)	
Plastic Card	Up to 1.4 mm* ⁸	
ADF Capacity* ⁹	300 sheets (A4 80 g/m ² or Letter 20 lb)	
Expected Daily Volume* ¹⁰	44,000 sheets	
Multifeed Detection	Overlap detection (Ultrasonic sensor), Length detection	
Paper Protection	Lag detection, Sound detection (iSOP)* ¹¹	
Interface	USB 3.1 Gen 1 / USB 2.0 / USB 1.1	

Power Requirements	AC 100 to 240 V ±10 %	
Power Consumption		
Operating Mode	64 W or less	
Sleep Mode	1.7 W or less	
Auto Standby (Off) Mode	0.35 W or less	
Operating Environment		
Temperature	5 to 35 °C (41 to 95 °F)	
Relative Humidity	20 to 80% (non-condensing)	
Environmental Compliance	ENERGY STAR®, RoHS	
Dimensions* ¹² (Width x Depth x Height)	706 x 500 x 345 mm (27.8 x 19.7 x 13.6 in.)	
Weight	35 kg (77 lb)	
Supported Operating System	Windows® 11, Windows® 10, Windows® 8.1, Windows® 7, Windows Server® 2022, Windows Server® 2019, Windows Server® 2016, Windows Server® 2012 R2, Windows Server® 2012, Windows Server® 2008 R2, Windows Server® 2008* ¹³	
Included Software / Drivers	PaperStream IP driver (TWAIN/TWAIN x64/ISIS), WIA Driver* ¹⁴ , PaperStream Capture, PaperStream ClickScan* ¹⁵ , Software Operation Panel, Error Recovery Guide, ABBYY FineReader for ScanSnap™* ¹⁵ , Scanner Central Admin, 2D Barcode for PaperStream* ¹⁵	
Image Processing Functions	Multi image output, Automatic color detection, Blank page detection, Dynamic threshold (iDTC), Advanced DTC, SDTC, Error diffusion, Dither, De-Screen, Emphasis, Dropout color (None/Red/Green/Blue/White/Saturation/Custom), sRGB output, Hole punch removal, Index tab cropping, Split image, De-Skew, Edge correction, Vertical streaks reduction, Cropping, Static threshold, Divide long page	
Included Items	Stacker, ADF paper chute, AC cable, AC adapter, USB cable, Setup DVD-ROM	
Options		
Black Document Pad (FI-575BK)	PA03338-D960	Black flatbed background pad
PaperStream Capture Pro Scan Station (LV)	PA43404-A685	PaperStream Capture Pro optional license

Consumables

Brake Roller	PA03740-K010	Every 250,000 sheets or one year
Pick Roller	PA03740-K011	Every 250,000 sheets or one year

*¹ Actual scanning speeds are affected by data transmission and software processing times. *² Indicated speeds are from using JPEG compression. *³ Indicated speeds are from using TIFF CCITT Group 4 compression. *⁴ Selectable maximum resolution may vary depending on the length of the scanned document. *⁵ Limitations may apply to the size of documents that can be scanned, depending on system environment, when scanning at high resolution (over 600 dpi). *⁶ Capable of scanning documents that exceed legal sheets in length. Long page scanning supports documents with lengths of up to 5,588 mm (220 in.) when the resolution is set to 200 dpi or less. Documents of up to 200 m (218.8 yd.) can be scanned if scans of long page documents are split into multiple pages. *⁷ Paper weight limitations only apply when using the ADF. There are no limitations when using the flatbed. *⁸ Capable of scanning up to 3 cards at a time when using the ADF. (Note: only one embossed card can be scanned at a time). *⁹ Maximum capacity depends on paper weight and may vary. *¹⁰ Numbers are calculated using scanning speeds and typical hours of scanner use, and are not meant to guarantee daily volume or unit durability. *¹¹ Intelligent Sonic Paper Protection. *¹² Excludes the ADF hopper and stacker. *¹³ Requires PaperStream IP 1.60.0 or earlier and PaperStream Capture 2.8.2 or earlier. *¹⁴ Functions equivalent to those offered by PaperStream IP may not be available with the WIA Driver. *¹⁵ Refer to the fi Series Support Site for driver/software downloads and full lineup of all supported operating system versions.

Trademarks
ABBYY™ FineReader™ Engine © ABBYY. OCR by ABBYY. ABBYY and FineReader are trademarks of ABBYY Software, Ltd. which may be registered in some jurisdictions. ISIS is a trademark of Open Text. Microsoft, Windows, and Windows Server are either registered trademarks or trademarks of Microsoft Corporation in the United States and/or other countries. Any other products or company names appearing in this document are the trademarks or registered trademarks of the respective companies.

Safety Precautions
Be sure to carefully read all safety precautions prior to using this product and use this device as instructed. Do not place this device in wet, moist, steamy, dusty or oily areas. Using this product under such conditions may result in electrical shock, fire or damage to this product. Be sure to limit the use of this product to listed power ratings.

ENERGY STAR®
PFU Limited, a Fujitsu company, has determined that this product meets the ENERGY STAR® guidelines for energy efficiency. ENERGY STAR® is a registered trademark of the United States.

Specifications are subject to change without notice. Visit your local Fujitsu website for more information.

Contact

Indonesia PT Fujitsu Indonesia Tel: +62 21 570 9330 marketing_fid@fujitsu.com www.fujitsu.com/id/scanners	Malaysia Fujitsu (Malaysia) Sdn Bhd Tel: +603 8250 4188 askfujitsu.my@fujitsu.com www.fujitsu.com/my/scanners	Philippines Fujitsu Philippines, Inc. Tel: +63 2 841 8488 info@ph.fujitsu.com www.fujitsu.com/ph/scanners	Singapore Fujitsu Asia Pte Ltd Tel: +65 6512 7555 scanner@fujitsu.com www.fujitsu.com/sg/scanners	Thailand Fujitsu (Thailand) Co., Ltd. Tel: +66 2 302 1500 info.th@fujitsu.com www.fujitsu.com/th/en/scanners	Vietnam Fujitsu Vietnam Limited Tel: + 84 4 2220 3113 sales-vn@fujitsu.com www.fujitsu.com/vn/en/scanners
--	--	--	--	---	--